

Southport



Yacht Club Inc.

QUEENSLAND LASER ASSOCIATION METROPOLITAN TITLES

Saturday 2nd February and Sunday 3rd February 2019



SAILING INSTRUCTIONS



Southport Yacht Club Inc.
Hollywell Sailing Squadron
1 Marina Crescent, Hollywell, QLD 4216
07 5537 7030 www.southportyachtclub.com.au



1. RULES

- 1.1 The Regatta will be governed by the current rules as defined in the Racing Rules of Sailing 2017-2020 (RRS)
- 1.2 The Prescriptions and Special Regulations of Australian Sailing (AS),
- 1.3 The Laser International Association Class Rules applies.
- 1.4 When conflict occurs between the Notice of Race and the Sailing Instructions, the rules of the Sailing Instructions shall prevail. This changes RRS 63.7

2. NOTICES TO COMPETITORS

Notices to competitors will be posted on the official notice board located outside the Southport Yacht Club sailing office.

3. CHANGES TO SAILING INSTRUCTIONS

Any change to the Sailing Instructions will be posted before 0900 hours on the day it will take effect, except that any change to the schedule of races will be posted by 1800 hours on the day before it will take effect.

4. SIGNALS MADE ASHORE

- 4.1 Signals made ashore will be displayed on the flagstaff located on the tower of the Hollywell clubhouse.
- 4.2 When flag AP is displayed ashore '1 minute' is replaced with 'not less than 50 minutes' in the race signal AP.

5. SCHEDULE OF EVENTS

- 5.1 A maximum of 6 races over the 2-day period will be sailed
- 5.2 The following is the schedule of events:

DATE-2019	EVENT	TIME
Saturday 2 nd February	- Registration	0900hrs
	- Compulsory Briefing	1000hrs
	- Race Day 1 Warning not before	1200hrs
Sunday 3 rd February	- Compulsory Briefing	1000hrs
	- Race Day 2 Warning not before	1125hrs
	- Presentation – Burger & Chips	ASAP after racing

6. MEASUREMENT

Measurement checks may be made at any time during the regatta

7. CLASS FLAGS

- Laser Standard - The flag will be white with a red Laser class insignia
Laser Radial The flag will be Green with a red Laser class insignia
Laser 4.7 The flag will be Yellow with a red Laser class insignia

8. RACING AREAS

Attachment 1 and 2 shows the location of the racing area.

9. COURSES

- 9.1 Saturday's course will be an Offshore Trapezoid course as described in Appendix A. (Weather/conditions dependant)
- 9.2 Sunday's race will be an Inshore Windward/Leeward Course as described in Appendix B.

10. MARKS

- 10.1 Marks in Appendix A will be as follows:
 - 10.1.1 Start/Finish Mark is a black & white Inflatable buoy
 - 10.1.2 Mark 1 will be an Orange cylindrical buoy
 - 10.1.3 Mark 2 will be a Yellow cylindrical buoy
 - 10.1.4 Mark 3s/3p will be an Orange Cone
 - 10.1.5 Mark 4 will be an Orange cylindrical buoy
- 10.2 Marks in Appendix B will be as follows:
 - 10.2.1 Start Mark is a black & white Inflatable buoy
 - 10.2.2 Mark 1 will be an orange buoy
 - 10.2.3 Mark 4s/4p will be an Orange Cone
 - 10.2.4 Finish mark will be a white buoy

11. AREAS THAT ARE OBSTRUCTIONS

The Start/Finish line is an obstruction of the course unless starting or finishing.

12. THE START

- 12.1 Races will be started by using rule 26 with the warning signal made five (5) minutes before the starting signal.
- 12.2 The starting line will be between a staff displaying an orange flag on the Start Boat and the port-end starting mark.
- 12.3 There may be a barging buoy (pink tear drops) off the stern of the Start Boat.
- 12.4 A boat starting later than four (4) minutes after her starting signal will be scored Did Not Start without a hearing. This changes rule A4.

13. CHANGE OF THE NEXT LEG OF THE COURSE

- 13.1 The race committee may change a leg of the course that begins at a rounding *mark* or at a gate by changing the position of the next *mark* (or the finishing line) and signalling all boats before they begin the leg. The next *mark* need not be in position at that time.

14. THE FINISH

The finishing line will be between a staff displaying a Blue flag on the start boat at the starboard end and the port-end finishing mark.

15. TIME LIMITS & TARGET TIMES

- 15.1 The target time for each race is 50 minutes.
- 15.2 If no boat has passed Mark 1 within 30 minutes the race will be abandoned. Failure to meet the target time will not be grounds for redress. This changes RRS 62.1(a).
- 15.3 Boats failing to finish within 20 minutes after the first boat sails the course and finishes may be scored their position on the course and is not subject to protest. This changes rule 35, A4 and A5.

16. PROTESTS AND REQUESTS FOR REDRESS

- 16.1 RRS AppendixT – ARBITRATION applies
- 16.2 Boats intending to protest shall inform the Race Committee immediately after finishing by approaching the starboard side of the Start Boat after finishing and hailing the protested boat's sail number. This changes RRS 61.1
- 16.3 Protest forms are available at the race office located at the Hollywell Sailing office. Protests and requests for redress or reopening shall be delivered there within the appropriate time limit.

- 16.4 The protest time limit is 90 minutes after the last boat has finished the last race of the day.
- 16.5 Notices will be posted no later than 30 minutes after the protest time limit to inform competitors of hearings in which they are parties or named as witnesses. Hearings will be held in the Hollywell Sailing office beginning at the time posted.
- 16.6 Notices or protests by the race committee will be posted to inform boats under rule 61.1(b).
- 16.7 Breaches of instructions 11, 18, and 22 will not be grounds for protest by a boat. This changes rule 60.1(a). Penalties for these breaches will incur a 3-place scoring penalty. The scoring abbreviation for a discretionary penalty imposed under this instruction will be DPI.
- 16.8 On the last scheduled day of racing a request for reopening a hearing shall be delivered
 - (a) within the protest time limit if the requesting party was informed of the decision on the previous day;
 - (b) no later than 30 minutes after the requesting party was informed of the decision on that day.This changes rule 66.
- 16.9 On the last scheduled day of racing a request for redress based on a protest committee decision shall be delivered no later than 30 minutes after the decision was posted. This changes rule 62.2.

17. SCORING

- 17.1 The Low Point Scoring System of Appendix A will apply.
- 17.2 One (1) race is required to be completed to constitute a series.

18. SAFETY REGULATIONS

- 18.1 All skippers shall SIGN ON before racing each day and SIGN OFF at the earliest possible time after the completion of racing (but not later than the end of protest time). Forms will be available outside the Hollywell Sailing Office from 0900 on the day of racing.
- 18.2 The skipper of a boat that retires or does not intend to continue racing is required to notify an official Support Boat prior to returning through the GC Seaway and SIGN OFF immediately on return to shore.
Please Note: Failure to SIGN OFF may result in a full safety alert with all race committee vessels and patrol boats remaining on course until the vessel is found.

19. REPLACEMENT OF CREW OR EQUIPMENT

Substitution of skippers will not be allowed.

20. EQUIPMENT AND MEASUREMENT CHECKS

A boat or equipment may be inspected at any time for compliance with the class rules and sailing instructions. On the water, a boat can be instructed by a race committee equipment inspector or measurer to proceed immediately to a designated area for inspection.

21. OFFICIAL BOATS

Official boats will be marked with the SYC burgee.

22. SUPPORT BOATS

- 22.1 Team leaders, coaches and other support personnel shall stay outside areas where boats are racing from the time of the preparatory signal for the first class to start until all boats have finished or retired or the race committee signals a postponement, general recall or abandonment. Unless they deem it is necessary for safety reasons.
- 22.2 Support boats are required to register with the Hollywell Sailing office and supply the skipper's details, boats call sign, contact number and competitor they are representing.
- 22.3 When the wind is less than 10 knots all team leaders, coaches and other support boats shall not exceed 5 knots within 500m of the area where boats are racing. Additionally, coach and support boats shall not exceed 5 knots and shall not create wake at any time when they are within 100m of the starting area.
- 22.4 The penalty for failing to comply with SI 22 may result in the disqualification (from the race/s in which the infringement took place) of all boats associated with the infringing boat or other penalty at the discretion of the Jury.

23. RUBBISH DISPOSAL

Boats shall not put trash in the water. Trash may be placed aboard support and race committee boats.

24. BERTHING

Boats shall be kept in their assigned rigging and storage areas

25. RADIO COMMUNICATION

Except in an emergency, a boat shall neither make radio transmissions while racing nor receive radio communications not available to all boats. This restriction also applies to mobile telephones. Race control shall be using VHF09.

26. TRACKING DEVICES

Boats competing may be required to use a suitable mobile phone (Android/Apple) to operate the App "RaceQS" for tracking and relay purposes. Further details on using RaceQS can be downloaded from www.raceqs.com NB: Boats that have competed at the Nationals recently at SYC should please use the waterproof case provided previously.

27. PRIZES

- 27.1 1ST, 2ND & 3RD Overall for each division.
- 27.2 The Title of Metropolitan Champion will be awarded to the lowest point score and will be awarded the Perpetual Trophy for each division.
- 27.3 Other awards may be given at the discretion of the Organising Authority

28. DISCLAIMER OF LIABILITY

Competitors participate in the regatta entirely at their own risk. See rule 4, Decision to Race. The Organising Authority will not accept any liability for material damage or personal injury or death sustained in conjunction with or prior to, during, or after the regatta.

29. INSURANCE

Each participating boat shall be insured with valid third-party liability insurance with a minimum cover of \$10,000,000.00 per incident or the equivalent. Proof of insurance maybe required, clearly indicating the person, the amount and the period of coverage, at registration. All owners/competitors who sign the Entry Form are deemed to have made a declaration that they hold such cover.

30. RESULTS

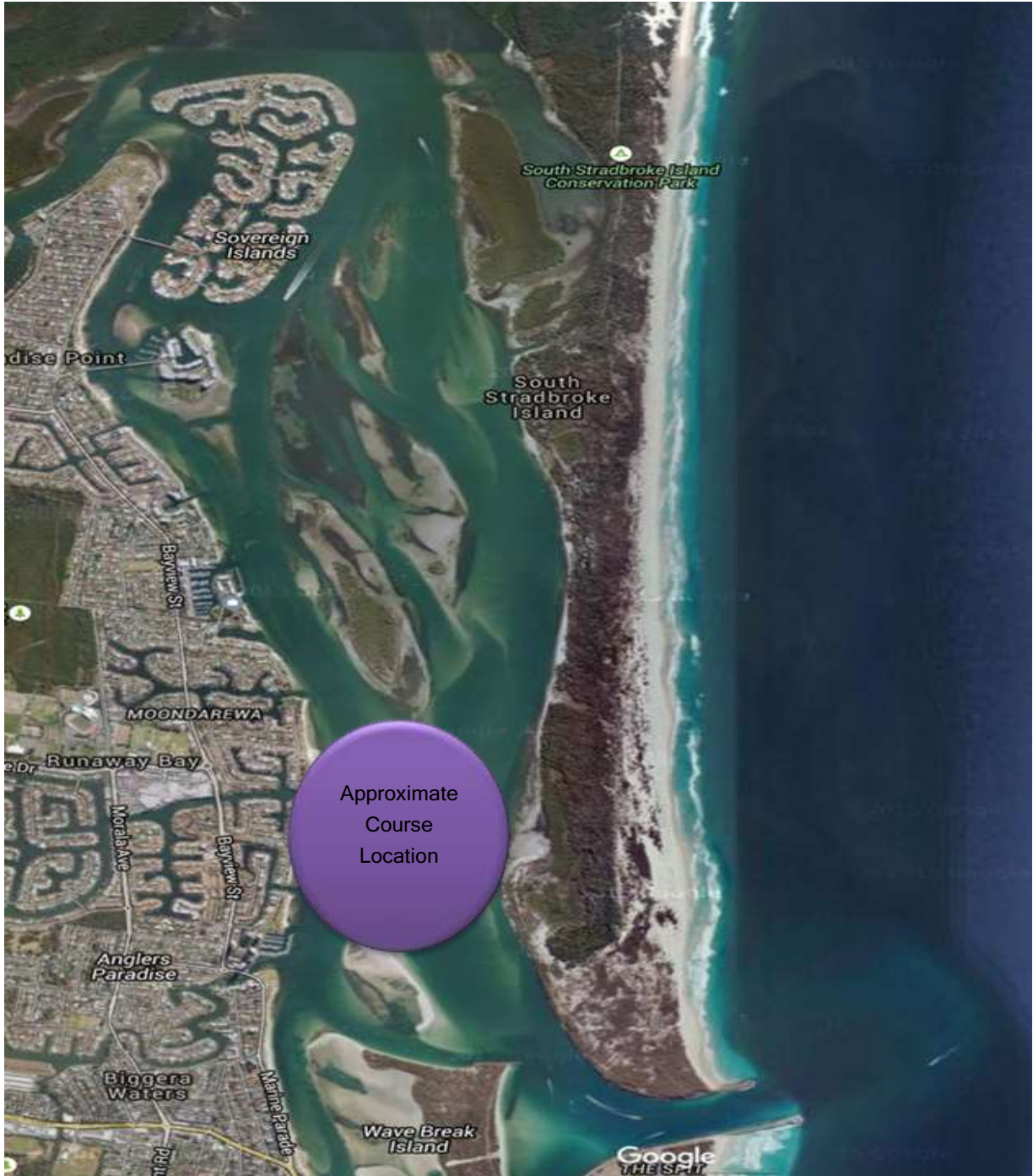
During the regatta results will be posted on the Special Events Section of the Southport Yacht Club website.

<https://www.southportyachtclub.com.au/results/2018/otbspecevents/>

ATTACHMENT 1 RACING LOCATION SATURDAY (Weather and conditions dependant)

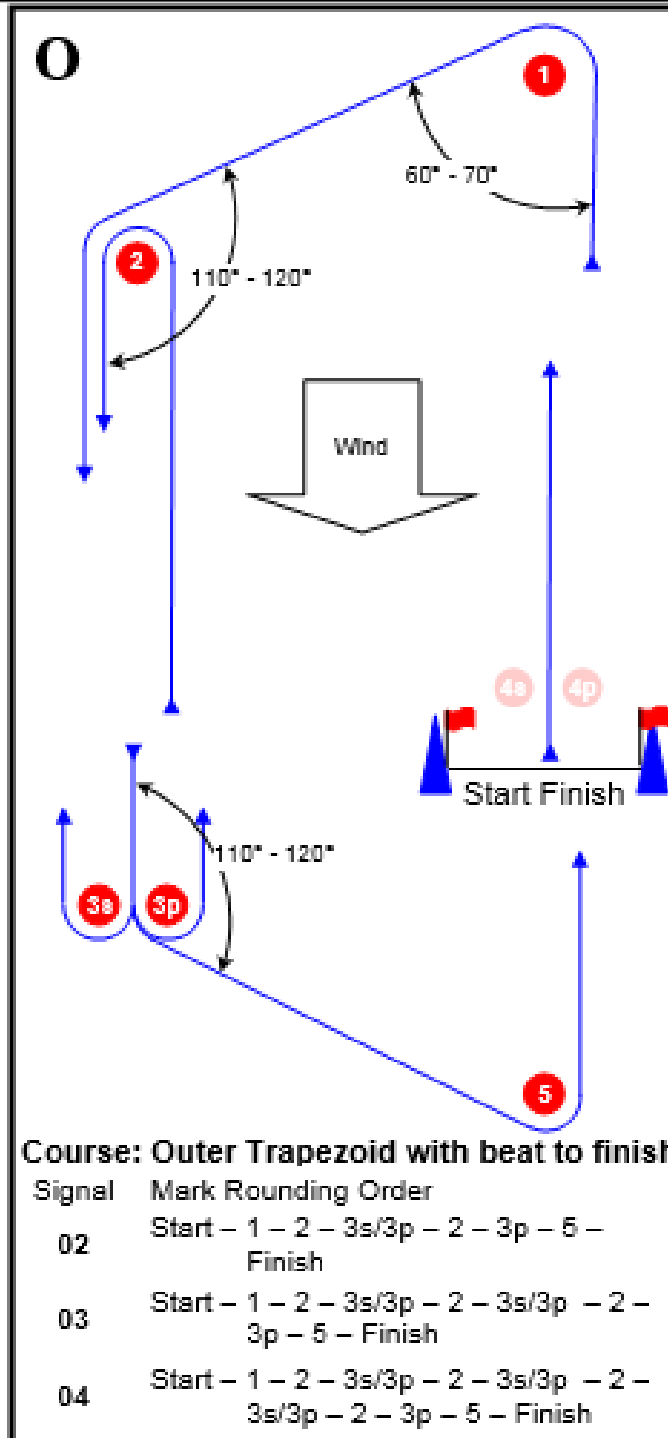


ATTACHMENT 2 RACING LOCATION SUNDAY



Appendix A Trapezoid Course

Course Illustrations – Trapezoid with beat to finish. Start and finish by signal boat



Appendix B Leeward Course

