

2019 Australian Para Sailing Championships

in conjunction with an Open Fleet Regatta in the 2.4mR, Hansa 303 one-
person, Hansa 303 two-person and SKUD 18 classes

2 - 4 August 2019

Sailing Instructions (SI's)



Organising Authority is Southport Yacht Club (SYC)
In conjunction with Australian Sailing (AS)



SAILING INSTRUCTIONS herein described are for the race courses.

[DP] denotes a rule for which the penalty is at the discretion of the Protest Committee. This changes RRS 64.1. Australian Sailing DP's are listed in Addendum J2.

[SP] denotes a rule for which a standard penalty will be applied by the race committee without a hearing. This changes RRS 63.1, Appendix A4 and Appendix A5. SPs for this event are listed in Addendum J2. A breach of any rule in Addendum J2 by a boat shall not be grounds for protest by another boat. This changes RRS 62.1(a).

[NP] denotes that a breach of this rule will not be grounds for protest by boat. This changes RRS 62.1(a).

1 [NP] [DP] Rules

- 1.1 The regatta will be governed by the rules as defined in *The Racing Rules of Sailing* (RRS)
- 1.2 [NP] [SP] Special Regulations of Australian Sailing, Part 2, for Off the Beach boats
- 1.3 ~~RRS Appendix P, Special Procedures for Rule 42, will apply modified so that P2.3 is deleted and P2.2 will apply to second and subsequent breaches of Rule 42.~~
- 1.4 RRS Appendix T, Arbitration, will apply as amended by SI14 below.
- 1.5 The Notice of Race and the Sailing Instructions. When conflict occurs between the Notice of Race and the Sailing Instructions, the rules of the Sailing Instructions shall prevail. This changes RRS 63.7

2 Notices to Competitors

Notices to competitors will be posted online and on the official notice board.

3 Changes to Sailing Instructions

- 3.1 Any change to the format or schedule of races will be posted by 1900hrs on the day before it will take effect.
- 3.2 Any change to the Sailing Instructions will be posted at least 1.5 hours before the scheduled time for the first race on the day it will take effect
- 3.3 Any reassignment of classes or class groups to course areas will be posted at least 1.5 hours before the scheduled time for the first race on the day it will take effect, or, if flag AP is displayed ashore, 30 minutes before flag AP for that class/group is removed.

4 [NP] [DP] Signals Made Ashore

- 4.1 Signals made ashore will be displayed at the flag mast located on the Eastern side of the club house.
- 4.2 When flag AP is displayed ashore, '1 minute' is replaced by 'not less than 30 minutes' in the race signal AP. This changes Race Signal AP.
- 4.3 [SP] [NP] Flag AP over H displayed ashore means 'Boats shall not leave the beach - "Wait for further instructions"'. This amends Race Signals.

5 Schedule of Races

5.1 Dates of racing:

Date	Time	
31 July	1000	Para Sailing Coaching Clinic
1 August	1000 1000	Para Classification Para Sailing Coaching Clinic
2 August	0800 – 1000 1100 1300 1700	Registration Competitor and Support Boats Briefing Racing – Time of first warning signal Para Sailing Forum
3 August	0800 0930 1100	Sailing Office Opens Competitor and Support Boats Briefing Racing – Time of first warning signal
4 August	0800 0930 1100 1600 (approx.)	Sailing Office Opens Competitor and Support Boats Briefing Racing – Time of first warning signal Prizegiving Ceremony

- 5.2 There will be a maximum of 9 races scheduled for the 2.4mR, Hansa 303 one-person, Hansa 303 two-person and SKUD 18 classes.
- 5.3 The warning signal for each succeeding race in a race session will be made as soon as practicable after the completion of the previous race.
- 5.4 To alert boats that a race or sequence of races will begin soon, the orange starting line flag will be displayed, with one sound, for at least five minutes before a warning signal is displayed.
- 5.5 No warning signal will be made after 1500hrs on Sunday 4th August 2019.

6 Class Flags

Class flags will be the class insignia on a coloured background as listed below.

Class	Class Insignia	Background Colour
2.4mR	BLACK	WHITE
Hansa 303 One-Person	RED	WHITE
Hansa 303 Two-Person	WHITE	RED
SKUD 18	PINK	WHITE

7 Course Race Areas

- 7.1 The racing area will be on the waters of the “Broadwater” between “Wavebreak Island” and “Sovereign Island”. Addendum A shows the location of the course race areas where racing will be conducted.
- 7.2 Class groups may be assigned to different race course areas each day – refer SI 3.3.

8 The Courses

- 8.1 The diagrams in SI Addendum B show, by class group and race management team, the courses, the marks, the course designations, the order in which marks are to be passed, and the side on which each mark is to be left.
- 8.2 Legs of the course will not be changed after the preparatory signal. This changes rule 33.
- 8.3 Courses will be designated on a board on the Race committee starting boat located on the starboard end of the start line and displayed before or with the warning signal.
- 8.4 No later than the warning signal, the race committee vessel may display the approximate compass bearing of the first leg.

9 Marks

9.1

Marks	Colour
Marks 1a, 2P and 2S	Orange inflatable cylinder approximately 1.80 Metres high and 0.80 Metres diameter.
Mark 1	Orange with Black Top inflatable cylinder approximately 1.80 Metres high and 0.80 Metres diameter
Start Mark	Black & White chequered inflatable buoy approx. 1.5 x 0.6m
Finish Mark	White inflatable buoy approx. 1.5 x 0.6m

10 The Start

- 10.1 The starting line will be between a staff displaying an orange flag on the start vessel at the starboard end and the course side of the port-end starting mark.
- 10.2 A barging buoy may be attached to the race committee starting boat. Boats shall not pass between this buoy and the race committee starting boat at any time.
- 10.3 [DP] Boats whose warning signal has not been made shall avoid the starting area during the starting sequence for other classes. The starting area is defined as a rectangle 50 metres from the starting line and marks in all directions.
- 10.4 A boat that does not start within 4 minutes after her starting signal will be scored Did Not Start without a hearing. This changes RRS A4 and A5

11 The Finish

The finishing line will be between a staff displaying a Blue flag on the race committee vessel and the course side of the finish mark.

12 Penalties at the time of an incident

- 13.1 RRS 44.1 and RRS P2.1 are changed so that a Two-Turns Penalty is replaced by a One-Turn Penalty.
- 13.2 Refer also SI14.10 and 14.11 Post Race Penalties and Arbitration.

13 [NP] Time Limits and Target Times

13.1 Time limits and target times are as follows:

Class	Time Limit	Finish Window	Target Time
2.4mR	60	15	35
Hansa 303 One-Person	60	15	35
Hansa 303 Two-Person	60	15	35
SKUD 18	60	15	35

13.2 Failure to meet the target times will not be grounds for redress. This changes RRS 35, 62.1(a), A4 and A5.

13.3 Boats which are still deemed to be racing by the Race Committee, but are outside the finish window, may be scored an allocated place based on their current position. Such boats may be directed to return to the starting area or other location without crossing the finish line. Neither the allocation of a finish place nor the failure to allocate a finish place will be grounds for redress. This changes RRS 28, 35, 62.1(a), A4 and A5

14 [NP] [DP] Protests, Arbitration and Requests for Redress

14.1 Protest forms are available at the Regatta Office. Protests and requests for redress or reopening shall be delivered there within the protest time limit.

14.2 For each class, the protest time limit is 60 minutes after the last boat has finished the last race of the day.

14.3 Notices will be posted no later than 30 minutes after the protest time limit to inform competitors of hearings in which they are parties or named as witnesses. Hearings will be held in the protest room, beginning at the time posted.

14.4 Notices of protests by the race committee, technical committee or protest committee will be posted to inform boats under RRS 61.1(b).

~~14.5 RRS Appendix P, Special Procedures for Rule 42, will apply as modified (SI 1.3). A list of boats that have been penalised under Appendix P for breaking RRS 42 will be posted.~~

14.6 SIs or NOR clauses marked [NP] shall not be grounds for redress or protest by a boat. This changes RRS 60.1

14.7 Penalties for breaches of SIs or NOR clauses marked [DP] are at the discretion of the jury and shall not be grounds for protest by a boat. This changes RRS 60.1(a) and 64.1

14.8 For breaches of the SIs or NOR clauses marked [SP], the race committee may apply a standard penalty without a hearing. A list of these breaches and the associated standard penalties will be posted on the Official Notice Board. However, the race committee may protest a boat when they consider the standard penalty to be inappropriate. This changes RRS 63.1 and Appendix A5.

14.9 On the last scheduled day of racing, a request for reopening a hearing shall be delivered

- within the protest time limit if the requesting party was informed of the decision on the previous day;

- no later than 30 minutes after the requesting party was informed of the decision on that day. This changes RRS 62.2.

14.10 Appendix T1(b) is deleted and replaced with - A Post-Race Penalty is either a Standard Penalty [SP] as specified in the Sailing Instructions, or a 30% Scoring Penalty calculated as stated in rule 44.3(c). However, rule 44.1(a) applies.

14.11 Appendix T1(c) is amended by adding the following sentence - Post-Race Penalty requests shall be in writing and on the Post-Race Penalty Declaration Form available from the Regatta Office.

15 Scoring

- 15.1 Three races are required to be completed to constitute a series.
- 15.2 When fewer than four races have been completed, a boat's series score will be the total of her race scores.
- 15.3 When four or more races have been completed, a boat's series score will be the total of her race scores excluding her worst score.
- 15.4 To request correction of an alleged error in posted race or series results, a boat shall complete a scoring enquiry form available at and to be submitted to the race office.

16 [DP] [NP] Safety Regulations

- 16.1 Competitors shall wear life jacket in accordance with NOR 1.3 at all times while afloat, except briefly while changing or adjusting clothing or personal equipment.
- 16.2 Boats not leaving the beach for a scheduled race shall promptly notify the Race Office.
- 16.3 [SP] Before leaving to race on each scheduled racing day, a crew member from each boat shall sign on. Sign on sheets will be available at the registration desk. Failure to sign-on will result in that boat having a 10% scoring penalty applied (but not worse than DNF) for the first race in the session. This changes RRS 63.1 and A5.
- 16.4 [SP] Within protest time limits after returning ashore, a crew member from each boat shall sign-off. Failure to sign-off will result in that boat having a 10% scoring penalty applied (but not worse than DNF) for the last race in the session. This changes RRS 63.1 and A5.
- 16.5 A boat that retires from racing shall notify the race committee before leaving the racing area, or, if that is not possible, shall notify the race office as soon as possible after returning ashore and shall complete a retirement declaration form at the race office before the expiry of the protest time limit.
- 16.6 Boats shall not sail into other course areas whilst the other course areas are racing. Boats not racing shall remain clear of boats that are racing and official boats.
- 16.7 When a race committee displays code flag "V" with repetitive sounds, all official and support boats on the relevant course area shall monitor the relevant Race Committee radio channel for search and rescue instructions.
- 16.8 Race course will use VHF Channel 09.

17 [DP] Replacement of Crew or Equipment

- 17.1 Substitution of helms will not be allowed. Substitution of crew will only be allowed with prior written approval of the Race Committee and shall comply with any restrictions in the Notice of Race.
- 17.2 Substitution of damaged or lost equipment will not be allowed unless approved by the Race Committee. Requests for substitution shall be (1) made in writing on the appropriate form collected from the Race Office, and (2) submitted to the Race Committee at the first reasonable opportunity.

18 [DP] Equipment and Measurement Checks

Equipment may be inspected at any time for compliance with the class rules and sailing instructions. When instructed by an event equipment inspector, a boat shall proceed immediately to a designated area for inspection.

19 [DP] [NP] Event Advertising

Boats may be required to display required event sponsor advertising. The Organising Authority will supply the advertising and instructions for their use.

20 [NP] Official Boats

Official boats will display a SYC burgee.

21 [DP] [NP] Coach and Support Boats

- 21.1 Coach and support boats are required to register via the online registration, display identification supplied by the Organising Authority, carry and monitor a working VHF radio capable of receiving the relevant race channels, be insured and comply with local regulations to be permitted to use berthing facilities at the venue. Support Boat Regulations are detailed in SI Addendum “C”.
- 21.2 Launching of non SYC coach and support boats are required to launch at Howard Street Boat Ramp.
- 21.3 Registered team managers, coaches and other support personnel will keep to leeward of the start line and its extensions between the preparatory signal and the start signal, and outside the racing area & more than 100 metres clear of any competing boat or mark of the course between the start signal and finish of the last boat, except when asked by the Race Committee to assist.

22 [DP] Radio Communication

A boat shall neither make radio or data transmissions while racing nor receive radio or data communications not available to all boats, except in an emergency or when using equipment provided by the race committee. This restriction also applies to mobile telephones.

23 Prizes

Prizes will be awarded in accordance with the NOR, and, in addition, at the discretion of the Organising Authority.

24 Disclaimer of Liability

Competitors participate in the Championships entirely at their own risk - see RRS 4, Decision to Race. The Organising Authority and Australian Sailing will not accept any liability for material damage or personal injury or death sustained in conjunction with or prior to, during, or after the event.

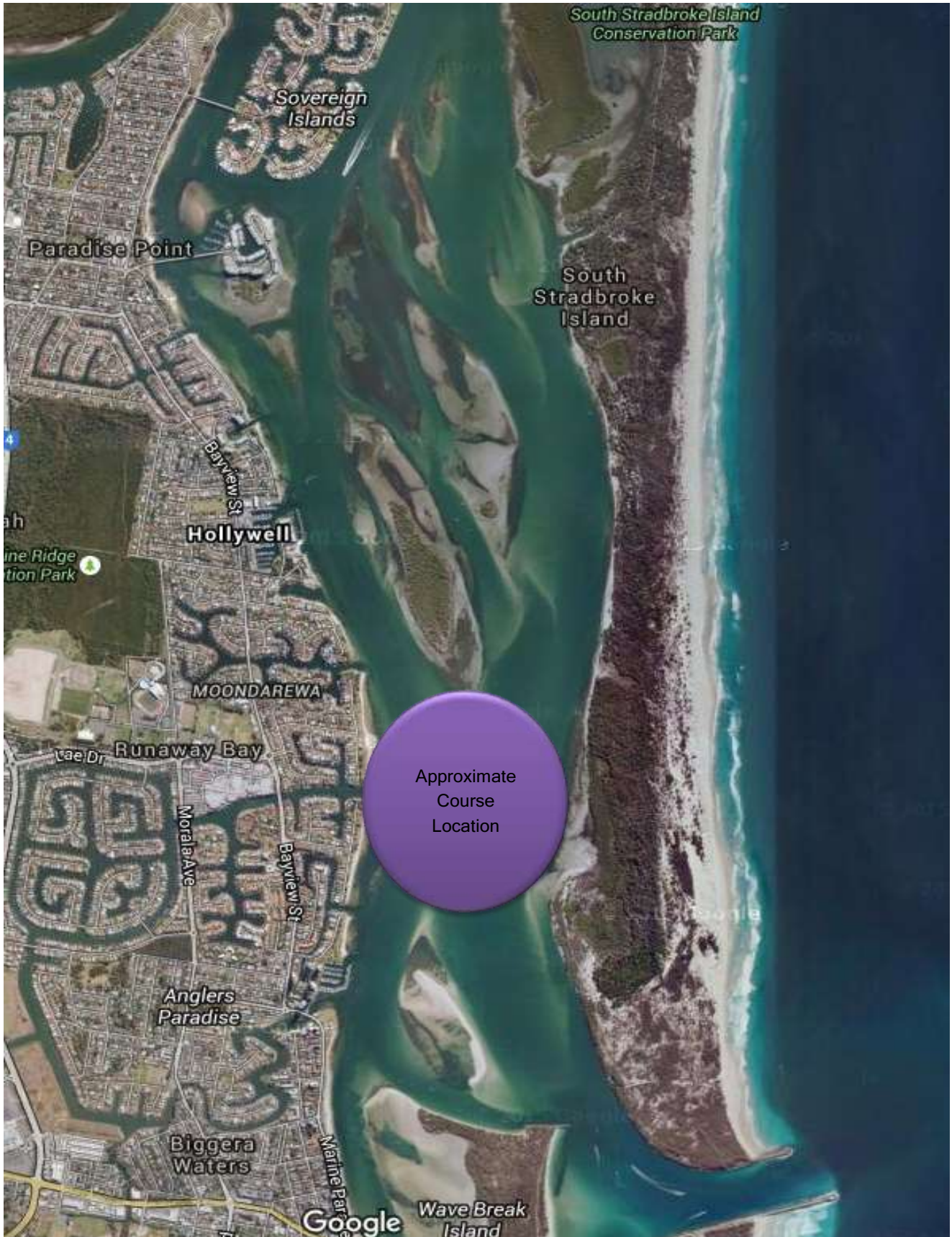
25 [NP] Insurance

Each participating boat shall be insured with valid third-party liability insurance with a minimum cover of A\$5,000,000 (recommended A\$10,000,000) per incident or the equivalent.

Attached:

SI Addendum “A”	Location of courses
SI Addendum “B”	Course descriptions for courses
SI Addendum “C”	Support Boat Regulations

ADDENDUM A



ADDENDUM B
Course Diagram

Skud 18

Course Codes & Courses

L1 Start - 1a - 2s/2p - Finish

L2 Start - 1a - 2s/2p - 1a - 2s/2p - Finish

L3 Start - 1a - 2s/2p - 1a - 2s/2p - 1a - 2s/2p - Finish

Hansa 303 One & Two Person

Course Codes & Courses

L1 Start - 1 - 2s/2p - Finish

L2 Start - 1 - 2s/2p - 1 - 2s/2p - Finish

L3 Start - 1 - 2s/2p - 1 - 2s/2p - 1 - 2s/2p - Finish

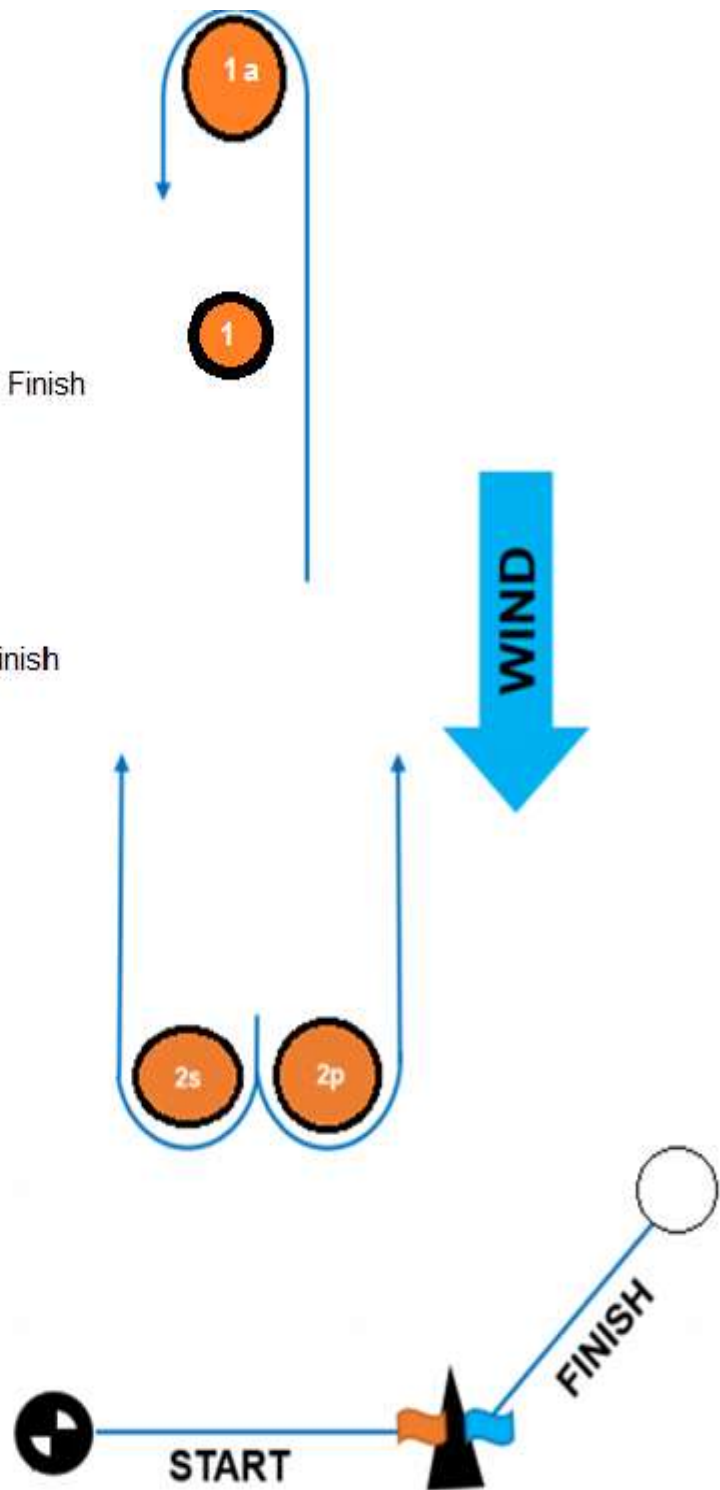
Mark Description

Mark 1a, 2s, 2p: Orange Inflatable

Mark 1: Orange Black Top Inflatable

Start Pin: Black and White Inflatable

Finish Pin: White Inflatable



ADDENDUM C Support Boat Regulations

1 General

- 1.1 These Support Boat Regulations (SBR) shall apply at all times while the boat is at the venue (SYC) www.msq.qld.gov.au/Safety/Safety-equipment-recreational-ships
- 1.2 For the purposes of these regulations, a support boat includes any boat that is under the control or direction of a person who is or may provide physical or advisory support to an athlete, including the gathering of data that may be used at a later time.
- 1.3 The Organising Authority may inspect boats at any time to ensure that they comply with these regulations, and the person responsible for the boat shall facilitate such inspection.
- 1.4 An alleged breach of any of these regulations may be referred to the National Jury for a hearing. As a result of any hearing, the National Jury may instruct the Organising Authority to withdraw accreditation and access rights from the driver or person in charge, with or without the option of substitution, either for a specified period or for the remainder of the competition.
- 1.5 The Organising Authority may change these regulations at any time. Any changes will be posted on the Official Notice Board.
- 1.6 The Organising Authority may, at its discretion, refuse to register support boats not deemed to be suitable. Generally, open boats more than 4.0m and less than 7.5m in length and having minimal or no superstructure (cabin, coach house, bridge, etc) are considered suitable.
- 1.7 Support boats and designated drivers shall be registered at the Regatta Office either before leaving the venue by water for the first time or by 18:00 on the day before the first race of the Event that it is supporting, whichever is earlier.
 - 1.7.1 Each boat shall be insured with valid third-party liability insurance with a minimum coverage of AUD\$5,000,000 (or equivalent) per incident.
 - 1.7.2 Only accredited persons may be designated drivers.
 - 1.7.3 The person registering the support boat shall confirm that:
 - (a) a valid insurance certificate showing proof of third-party liability coverage as required by 1.7.1 has been obtained;
 - (b) each designated driver has a motorboat driving licence recognised by a national authority appropriate to that boat; and
 - (c) anyone who will be using a radio has an appropriate radio operation licence recognised by a national authority.
- 1.8 Support boats shall be provided with a numbered flag by the Organising Authority. Flags must be displayed at all times whilst afloat and returned to the Race Office at the end of the event.

2 Sailing Venue

- 2.1 Support boats shall use Howard street ramp for launching – these may be a short distance from the venue. Once launched, trailers shall be moved immediately to a designated trailer park or as otherwise directed by the Organising Authority.
- 2.2 Only registered support boats will be allowed into the sailing venue. (Allocated berths or area will be provided at registration)
- 2.3 When not in use, support boats shall be appropriately berthed as directed by the Organising Authority in the allocated areas for support boats for the entire time that these SBR apply.
- 2.4 Support boats shall not use the dinghy launching slipways or keelboat pontoons for any purpose whatsoever, including mooring, launching and retrieval, and loading and unloading of equipment.

3 Safety

- 3.1 Support boats shall carry on board:
- (a) life jackets for all passengers and the driver;
 - (b) first-aid kit;
 - (c) working VHF radio capable of receiving the allocated race management channels for this event;
 - (d) device for making a sound signal;
 - (e) compass;
 - (f) adequate anchor and tackle for conditions and depth;
 - (g) tow rope (minimum 15m long and 10mm thick);
 - (h) operational engine kill cord (also known as a safety lanyard or automatic engine immobiliser);
 - (i) hand pump or bailer;
 - (j) knife; and
 - (k) any additional safety equipment required by local maritime law.

It is recommended that life jackets be worn at all times when afloat. All drivers shall wear a kill cord all times when the motor is in operation (refer back to manufacturer's operating manual. Refer to SBR Instruction 1.1 for use of life jackets.

- 3.2 The maximum plated / certified passenger limits for the boat shall never be exceeded.
- 3.3 Team leaders are responsible for overseeing the safe operation of their support boats on the water, including knowledge of who is afloat and ensuring their safe return to the venue.
- 3.4 At all times, the registered driver(s) of a support boat shall comply with directions given by a Race Official. In particular, this includes assisting in rescue operations when requested to do so – see 5.4 below.
- 3.5 Support boats shall comply with local harbour and marina regulations, including speed limits.
- 3.6 When a race committee displays code flag "V" with repetitive sounds, all official and support boats on the relevant course area shall monitor the relevant Race Committee radio channel for search and rescue instructions.

4 General Restrictions

- 4.1 The registered driver(s) of a support boat will be responsible for the control of the boat at all times and will be held responsible for any inappropriate behaviour, dangerous actions or improper practices, or actions affecting the fairness or safety of competition.
- 4.2 Support boats shall not leave any device, piece of equipment, buoy, marker or similar item permanently in the water. Temporary use of floating objects is allowed for current measurement. These objects shall be removed as soon as the measurement has been taken.
- 4.3 Support boats shall take particular care to minimise their wash when transiting the course areas. Support boats shall not interfere with boats racing or official boats or create a wake that affects boats racing.

5 Race Area Restrictions

- 5.1 Support boats shall not be positioned:
 - 5.1.1 Closer than 100 metres of any boat racing
 - 5.1.2 Within 100 metres of the starting line and marks from the time of the preparatory signal until all boats have left the starting area, or the race committee signals a postponement, general recall or abandonment.
 - 5.1.3 Between any boat racing and the next mark of the course.
 - 5.1.4 Within 100 metres of any mark of the course while boats are in the vicinity of that mark.
 - 5.1.5 Within 100 metres of the finishing line and marks while boats are finishing.
- 5.2 In addition, support boats that are motoring above 5 knots shall remain at least 150 metres from any boat racing.
- 5.3 When the race committee displays flag V with repetitive sounds, all official and support boats shall monitor the race committee radio channel for search and rescue instructions